

050-1900 8mm Single Rotary Latch - Two Position



TriMark's newest innovation in rotary latches features a robust modular design that offers extensive actuation locations and options providing application flexibility in a compact design. Designed for medium to heavy-duty applications for on or off-highway applications, this single rotor latch is available to meet FMVSS 206 (ECE R11).

DESIGNED FOR:

- Personnel, compartment door and door hold-open applications for on and off-highway vehicles
- Interior door thickness of 45-57mm (1.77-2.25"). Depending on the actuator type and location the overall height could be greater. Please contact TriMark for specific details.
- Medium to heavy duty doors of 23-81 kg (50-175 lbs.) with maximum door seal pressure of 36 kg (80 lbs.)

Global Locations:

TriMark Corporation
500 Bailey Avenue
P.O. Box 350
New Hampton, Iowa 50659
United States
Tel: 641-394-3188
Fax: 641-394-2392
1-800-447-0343
www.trimarkcorp.com

TriMark Europe
Cedar Court
Walker road
Bardon Hill
Coalville LE67 1TU
United Kingdom
Tel: +44(0)1530 512460
Fax: +44(0)1530 512461
www.trimarkeu.com

TriMark (Xuzhou)
Building A5 Jingwu Road
Xuzhou Economic
Development Zone
Xuzhou, Jiangsu
221004 PR China
Tel: +86 516 8773 0018
Fax: +86 516 8773 0058
www.trimarkcn.com



TriMark. Interactive. Product. Selector



TriMark



TriMark Corporation

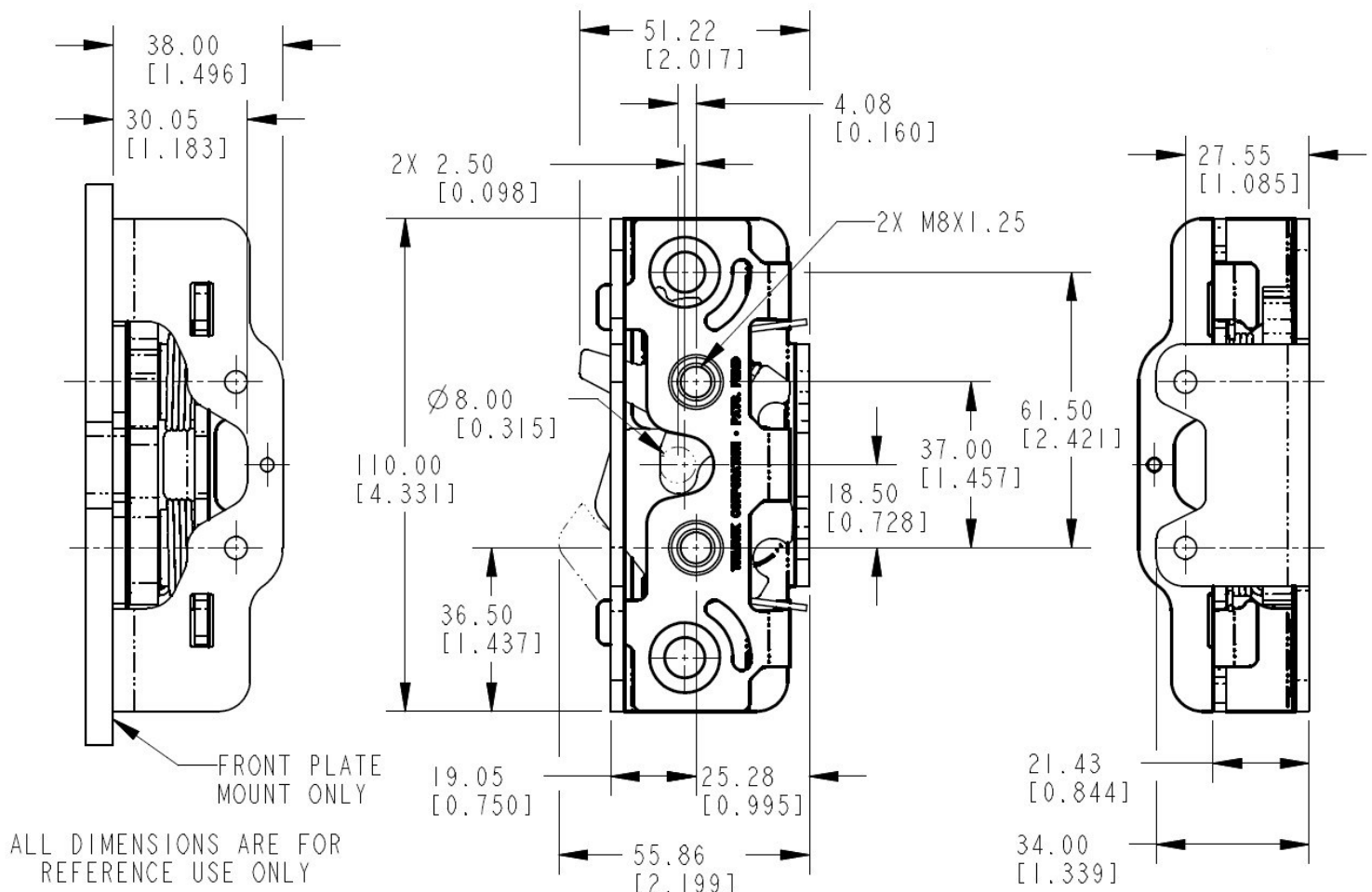
FEATURES/BENEFITS:

- Modular case construction is preconfigured with multiple actuation points on the front case allowing top/bottom actuation including stacked actuator levers providing the most configurable rotary door latch ever offered
- Compact size and shape allows maximum use of door space and minimizes visibility issues without compromising strength and robustness
- Rotor provides for vertical clearance of strike allowing for door sag, misalignment and ease of installation
- Two position rotor version for personnel door for FMVSS 206 (ECE R11) applications
- 8mm diameter automotive style hoop-type strike minimizes clothing snag hazard

AVAILABLE:

- In left or right hand configurations (right hand shown)
- Versions are available to allow direct actuation from exterior push button or pull handles and interior releases providing a simple, low cost and compact application
- Platform allows for reuse of TriMark's extensive selection of existing actuation levers reducing application engineering and tooling requirements
- Several actuator return spring options
- Coaxial actuator mechanism for applications where it is desirable to provide additional support to the actuation levers
- Innovative barrel release for ease of use/installation
- Future provisions for power release mechanisms and logic mechanism

For more information visit
www.trimarkcorp.com



Base Latch Shown Without Actuators



050-1900 8mm Single Rotary Latch - Two Position

MATERIAL:

- Case halves: high strength steel
- Rotor and catch: heat treated steel
- Springs: non-corrosive stainless steel

FINISH:

- Zinc plated, clear chromate steel components

INSTALLATION:

- Easy to install, mounts with (2) M8 x 1.25 class 8.8 or better fasteners are required for FMVSS 206 (ECE R11) applications (not included)
- Tighten to manufacturers' recommended torque value, however, do not exceed 26.0 N-m (230.1 in-lbs)

USE WITH:

- TriMark 070-1000 8mm Hoop Strike (required for FMVSS 206 (ECE R11) applications)

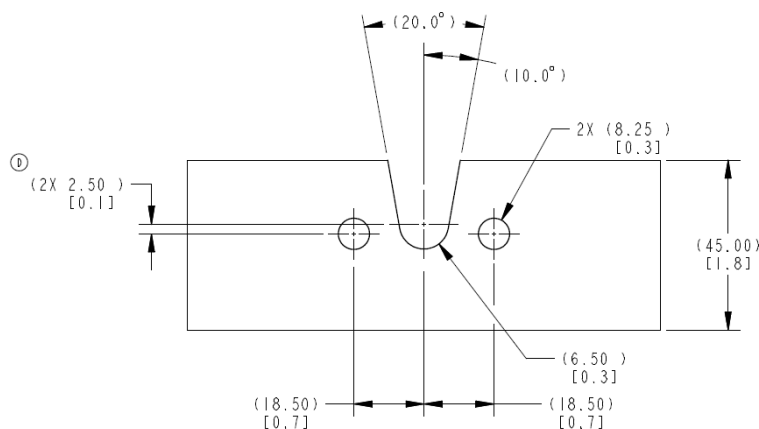
CAUTION: Applications of this latch may fall within the requirements of FMVSS 206 (ECE R11) and SAE J839 safety standards. These safety related requirements are dependent on door application, e.g. front and rear hinged doors, sliding doors, or hinged upward swinging doors. The entire door hardware system must be included in the design/analysis process: latch, handle, lock mechanism, cables/rods/linkages, fasteners, hinges, etc. This ensures compatibility of all components within the hardware system. If FMVSS 206 (ECE R11) is a requirement, then all of the components within the door system must comply with strength, inertia and locking requirements as specified within the Standard. Note that this product complies with FMVSS 206 (ECE R11) when tested with approved TriMark Striker Bolts in accordance with SAE J839 and that this product meets FMVSS 206 (ECE R11) load requirements and may be used in FMVSS 206 (ECE R11) applications pending TriMark application approval.

Individual part dimensions are for reference only. Refer to individual part drawings for complete dimensions, specifications, and installation procedures. Engineering assistance and application drawings are available.

U.S. Patent Nos. 10,676,967 / 10,697,207



Barrel Actuation With Direct Release Cam and Top Direct Release Actuator



ALL DIMENSION ARE FOR
REFERENCE USE ONLY.

CUTOUT

Mounting Details

070-1000 8mm Hoop Strike



Modular construction with multiple actuation points allows top/bottom actuation including stacked actuators as well as combinations of actuation points.

